



Family Guide

Accommodations for a Safe School Reopening Fall 2020

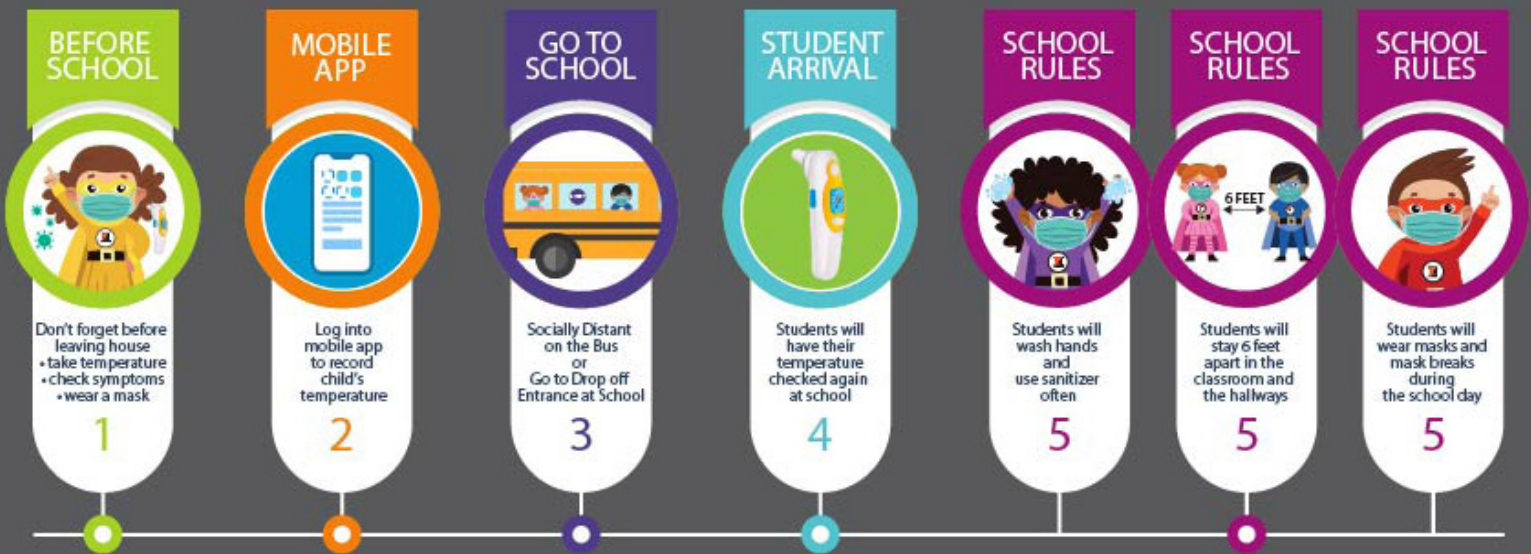


Hicksville Public Schools

We want you to feel secure.

At Hicksville Public Schools, we take your concerns seriously. We will take every precaution from the Department of Health (DOH) and the Centers for Disease Control and Prevention (CDC) guidance in order to keep your children safe. With your help, your children will transition to our new normal.

WHAT WILL MY CHILD'S SCHOOL DAY LOOK LIKE?



From before school to the last bell rings, this is some new rules your child will experience.

We want your children to feel safe and empowered.

At Hicksville Public Schools, we know this September will be a very anxious and confusing time for your children. To ensure that our students are reminded of health and safety protocols we have created a “Be a Hicksville Superhero” character and graphics poster campaign. Empowering students as “Superheroes” helps them to understand that they have a special role to play in keeping everyone – their classmates, friends, teachers, staff, and family members – safe at school and at home.



BE A HICKSVILLE SUPERHERO

WASH HANDS
WITH SOAP



SOCIAL
DISTANCING

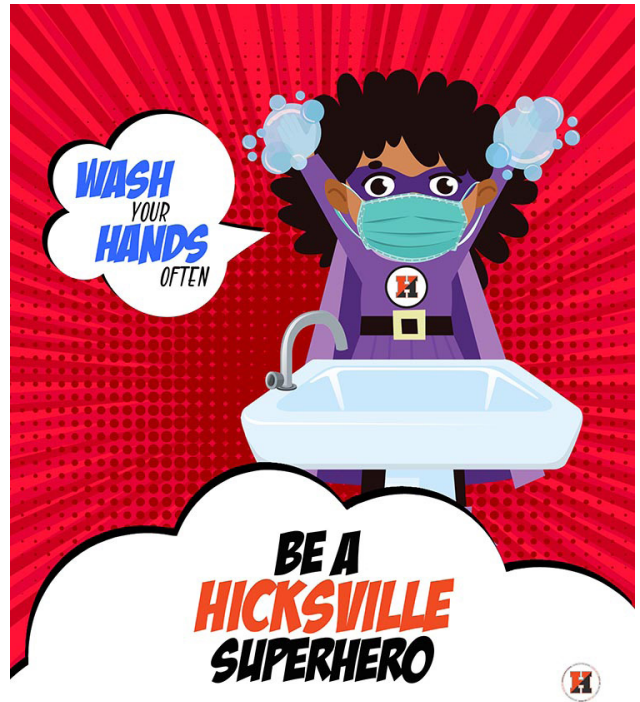
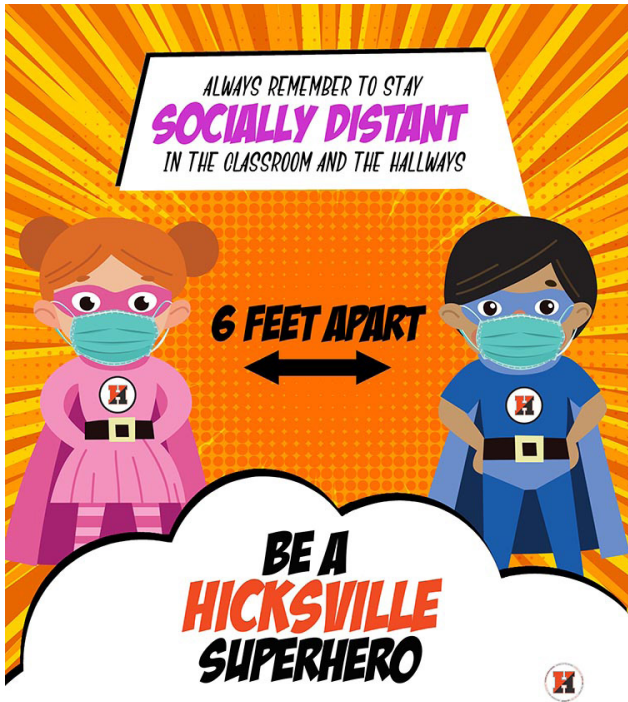


WEAR A
FACE MASK



STAY HOME
IF SICK





Elementary Posters



Secondary Posters



BE A HICKSVILLE SUPERHERO



BE A HICKSVILLE SUPERHERO

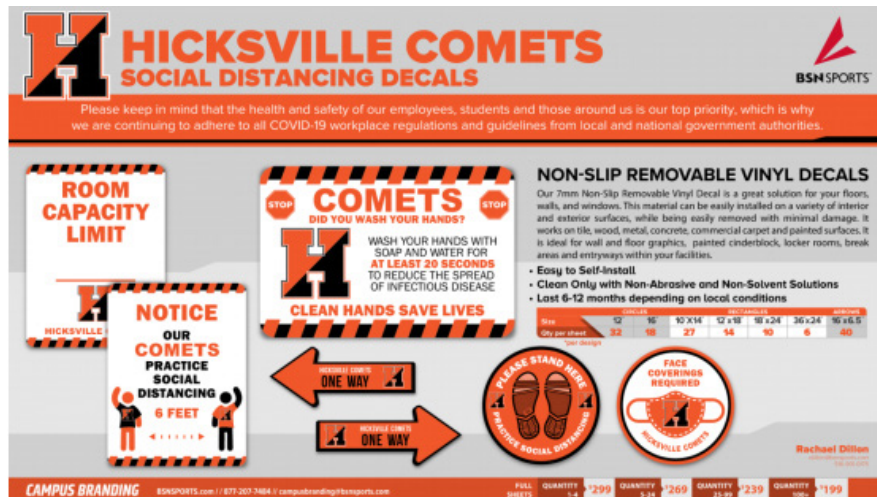


BE A HICKSVILLE SUPERHERO



What will change.

Hicksville Public School District is making changes to help facilitate all the new protocols. From signage to water fountains, all of the following changes will help students remain safe throughout the day.



In addition to new signage and decals, our buildings will have:

- 1 Touchless hand sanitizing stations
- 2 Touch free paper towel dispensers
- 3 Health screening for visitors
- 4 Outside drop boxes
- 5 Refillable Water Stations

SCHOOL BUS RULES

- ALWAYS WEAR A MASK
- STAY 6 FEET APART ON BUS
- SIBLINGS OR CHILDREN IN SAME HOUSEHOLDS CAN SIT TOGETHER



BE A HICKSVILLE SUPERHERO



Riding the bus will change. Be assured all our bus drivers and staff will:

- 1 Complete a health assessment before work
- 2 Wear masks and gloves at all times
- 3 Will be provided with Personal Protective Equipment (PPE)
- 4 Open windows 1 inch from the top for ventilation
- 5 Clean and disinfect the buses daily